

# MASS TRANSIT ACADEMY

BUILD AND SHARE SKILLS FOR AN EFFICIENT SYSTEM



MASS  
TRANSIT  
ACADEMY



# MASS TRANSIT

AN ESSENTIAL SOLUTION FOR THE CHALLENGES  
OF DENSELY-POPULATED METROPOLITAN AREAS

➤ AN UNRIVALLED TRANSPORT SYSTEM FOR EFFICIENT, SUSTAINABLE MOBILITY



■ INTENSE URBANIZATION

■ SATURATED CITIES

■ CLIMATE  
CHALLENGE

# MASS TRANSIT

## HIGH PASSENGER FLOWS—TO THE NEAREST SECOND



# MASS TRANSIT

A HIGHLY SKILLED PROFESSION FOR A DYNAMIC MARKET



■ 11 SKILLS FOR  
MASS TRANSIT  
SYSTEMS

■ RANKED IN THE TOP 10  
MASS TRANSIT CAPITALS

■ POTENTIAL MARKET OF 550  
MAJOR METROPOLITAN CITIES  
WORLDWIDE

# MASS TRANSIT ACADEMY

EXPERTISE FROM THE PARIS REGION,  
READY TO SERVE YOUR NEEDS



➤ IN 2016, TRANSILIEN + PARIS REGION NETWORK + KEOLIS  
JOINED FORCES TO CREATED A SHARED RESOURCE

# MASS TRANSIT ACADEMY

TWO MISSIONS—TWO MAJOR OBJECTIVES

## SUPPORT AND ACCELERATE:

- improvements in rail performance in densely populated areas
- growth of SNCF Group's mass transit market in France and around the world



■ BE A SKILLS FACTORY

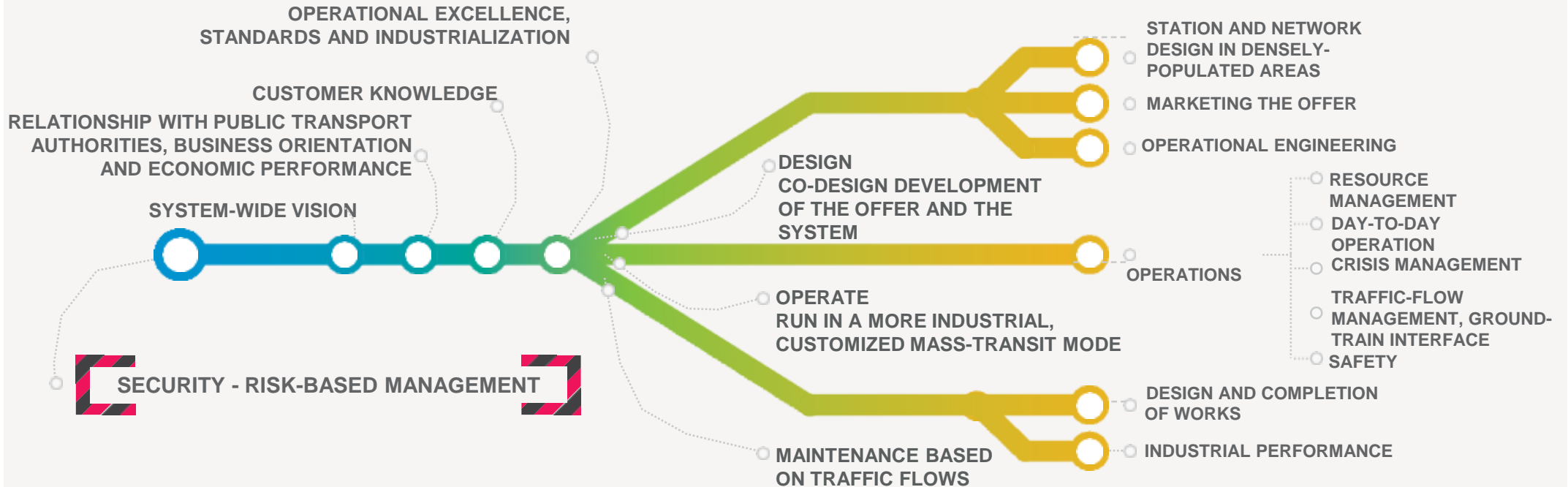


■ SELL SNCF EXPERTISE OUTSIDE FRANCE

## SHOWCASE SNCF GROUP'S HIGH-QUALITY MASS TRANSIT EXPERTISE

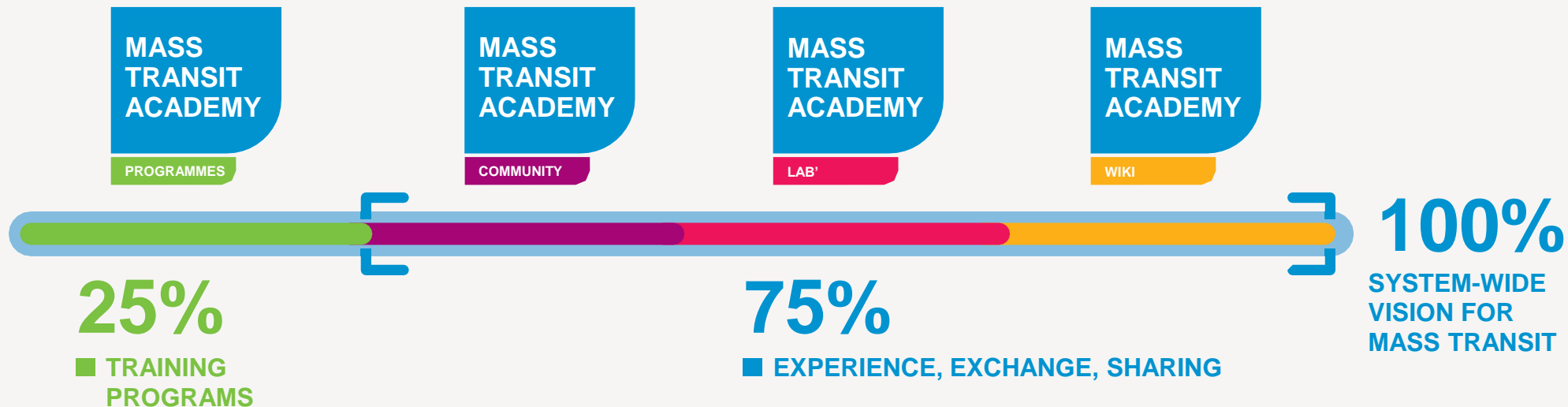
# 11 SKILLS FOR A MASS TRANSIT SYSTEM

DEVELOPED AND DISSEMINATED BY THE ACADEMY



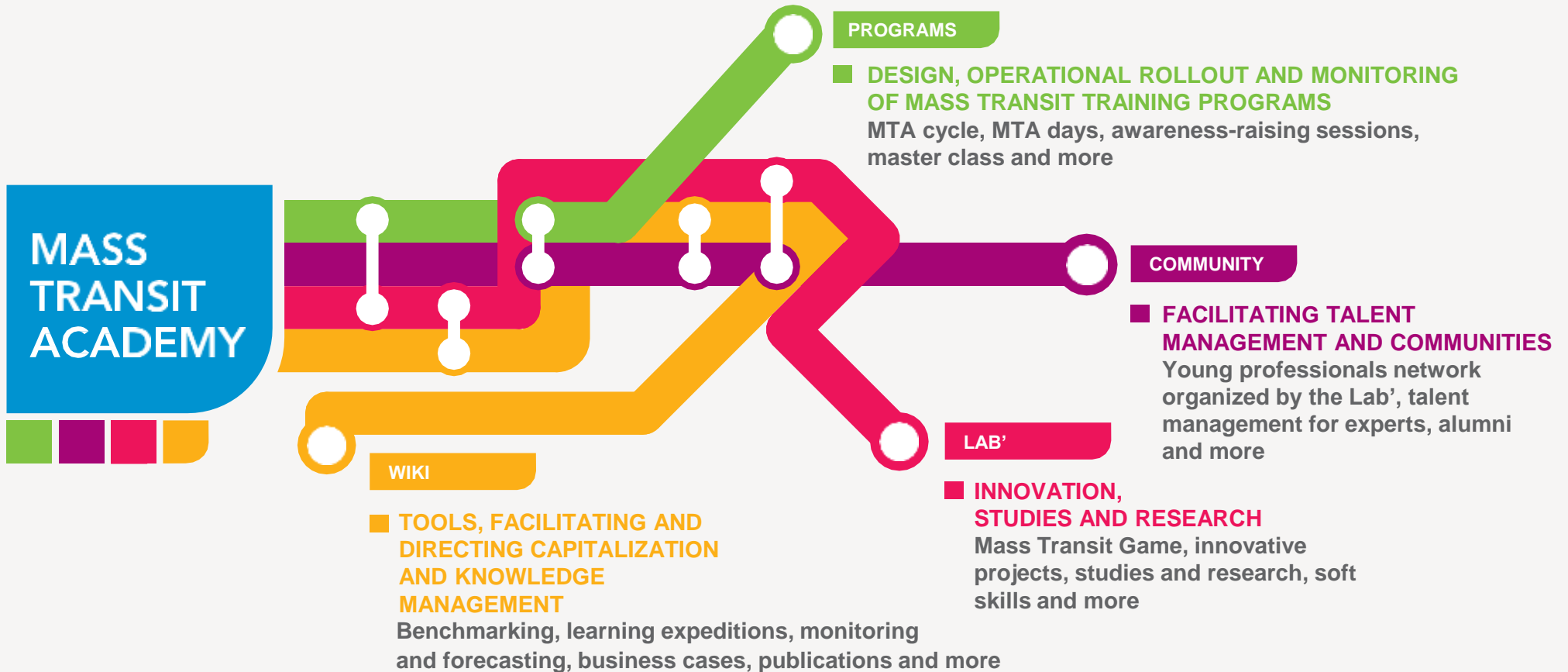
# MASS TRANSIT ACADEMY

DIFFERENT WAYS TO ACQUIRE SKILLS





# FOUR INTERCONNECTED ACTIVITIES



# FOCUS:

## TRAINING

### MASS TRANSIT ACADEMY

PROGRAMS



16  
DAYS

#### ■ CYCLE

Over an 8-month period, develop a system-wide vision for operating mass transit



1  
DAY

#### ■ DAY SHARED BY DIFFERENT PROFESSIONS

System-based approach for managers in densely-populated areas

#### ■ DAY TARGETING ONE PROFESSION

Traction managers in densely-populated areas

#### ■ GROUP TRAINING COURSE

Managing unforeseen disruptions with the IEF



2  
HOURS

#### ■ MASTERCLASS

Monthly seminars with internal and external speakers

# THE ACADEMY

## FAST FACTS

### PROGRAMMES



600

- Individual trainees have attended our various training programs

### COMMUNITY



180

- Managers and other members of mass transit experts pool

### LAB'



2

- Games developed: "Mass Transit Game" and "1300 Bornes"

### WIKI



3

- Learning expeditions: Tokyo/Hong Kong, Shanghai/Taipei, and the Toyota factory

150

- Internal and external experts—speakers in the Mass Transit Academy ecosystem



190

- Young managers and supervisors attending at least one of the five Young Professionals #The Network meetings



13

- Innovative projects tracked by the Lab'



5

- Experts consulted for the Toronto bid



# FOUR KEY ISSUES FOR 2018



## ■ BROADEN ACCESS TO TRAINING PROGRAMS AND MASS-TRANSIT CONTENT

by creating an online course to raise awareness of mass transit issues faced by all staff at Transilien and Keolis and in the Paris regional network



## ■ DEVELOP INNOVATIVE TRAINING TOOLS AND METHODS

SPOC, gaming, blended learning, knowledge management platform and more



## ■ BUILD ON THE SUCCESS OF H00 & FIRST

by adapting and rolling out the “train product” module; by organizing a “train product” learning expedition; and by reinforcing the passenger information content in the initial and professional development modules for the various skill sets



## ■ MAKE MASS TRANSIT INITIATIVES MORE OBVIOUS AND MORE VISIBLE

through a content strategy, especially on LinkedIn; Advisory Board; Speaker’s programme; partnerships with other Academies and more



## ➤ PREPARING TOGETHER FOR MAJOR MILESTONES: NEW-GENERATION TRAINS, EOLE, GRAND PARIS EXPRESS, PARIS 2024 OLYMPICS AND MORE

# THE TEAM

## AND OUR MAIN PARTNERS

### ➤ THE MASS TRANSIT ACADEMY TEAM

#### ■ AGNÈS GRISOGLIO

Director,  
Transformation &  
Mass Transit Academy

#### ■ LAURENT DE HARO

Deputy Director  
Mass Transit Academy

#### ■ CHANTAL JOIE-LA MARLE

Director of the Lab'

#### FROM TRANSILIEN:

#### ■ YANNICK MENUISIER

Operations

#### ■ CHRISTELE LEYMARIOS

Services

#### ■ FRANÇOISE TOURNASSOUD CLARISSOU

Strategy, Innovation & Development

#### ■ DELPHINE COMOLET

Training & Transilien University

#### FROM KEOLIS:

#### ■ BRUNO AUGER

Rail Director,  
Keolis

#### ■ JEAN-MICHEL GAUDRY

Rail Operations  
Director, Keolis

#### FROM THE PARIS REGION NETWORK:

#### ■ LAURENT QUELET

Traffic Director,  
SNCF's Paris Region Network

#### ■ BRUNO MAHEUT

Director of Projects,  
SNCF's Paris Region Network

#### ■ LIONEL THERY

Private secretary to the Director-  
General, SNCF's Paris Region Network

#### ■ MARIE-ANNE JEANNEL

Director of Management and Social  
Innovation, SNCF's Paris Region  
Network

### ➤ SPONSORS AND PARTNERS

