

SNCF HUBS & CONNEXIONS:
AMPLIFY OPPORTUNITIES
FOR PEOPLE & CITIES

HUB "NOUN":
THE CENTRAL
OR MAIN PART
OF SOMETHING
WHERE THERE
IS MOST ACTIVITY

CONNEXION "NOUN":
A RELATIONSHIP
IN WHICH A PERSON
OR A THING IS LINKED
OR ASSOCIATED WITH
SOMETHING ELSE

WHO WE ARE

WHAT WE DO

A PRACTITIONER'S EXPERTISE

CONSULTANT

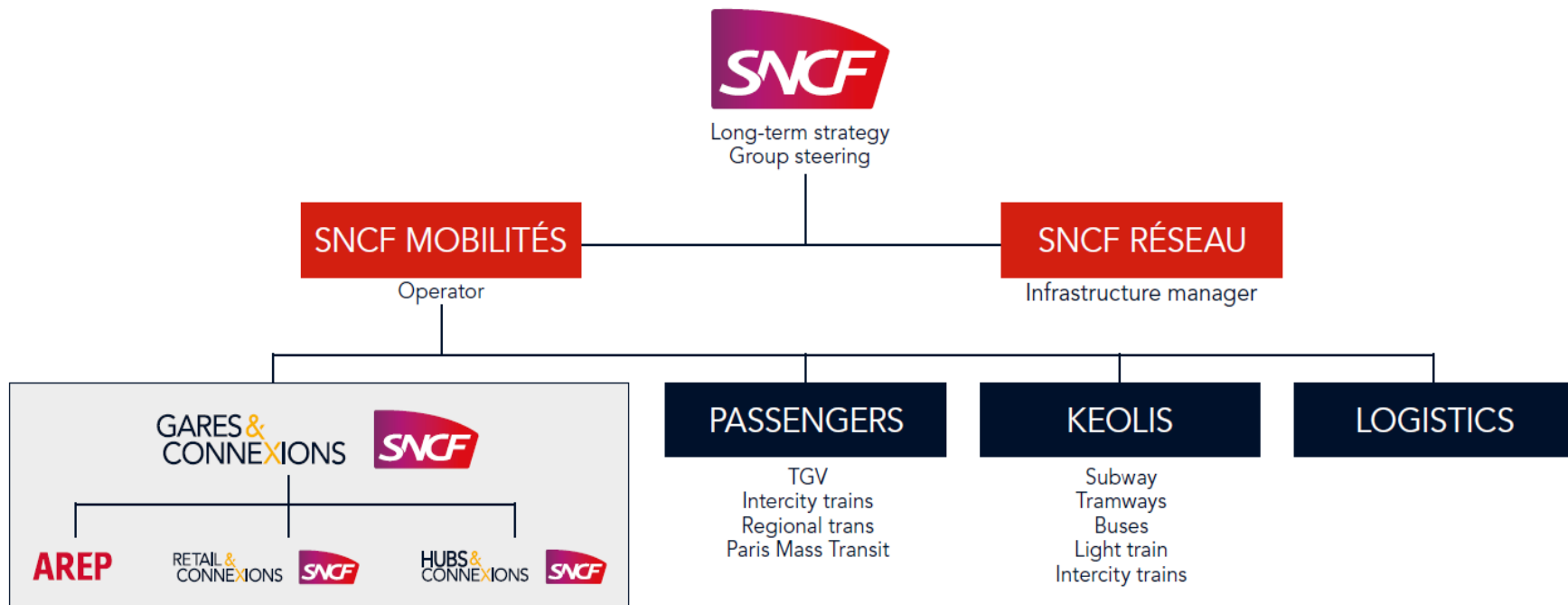
BID PARTNER

OPERATOR

WE CAN SUPPORT YOU IN MULTIPLE CAPACITIES

SNCF HUBS & CONNEXIONS

PART OF SNCF GROUP, THE WORLD LEADER IN MOBILITY,
DEDICATED TO INTERNATIONAL DEVELOPMENT



THE STATION IS A CITY BOOSTER

A VIBRANT HUB AT THE
CROSSROADS OF ALL
TRANSPORT NETWORKS

WHERE PEOPLE AND
IDEAS CONVERGE TO
CREATE VALUE FOR THE
COMMUNITIES

THAT BECOMES
THE CORNERSTONE
OF SUSTAINABLE
MODERNIZATION



TO DELIVER THIS VISION, **SNCF HUBS & CONNEXIONS** DRAWS ON THE EXPERTISE AND EXPERIENCE OF **SNCF GARES & CONNEXIONS**



ARCHITECTURE & DESIGN

- ARCHITECTURAL STUDIES
- TOWN PLANNING
- BUILDING INFORMATION MODELING (BIM)
- SIGNAGE & WAYFINDING DESIGN

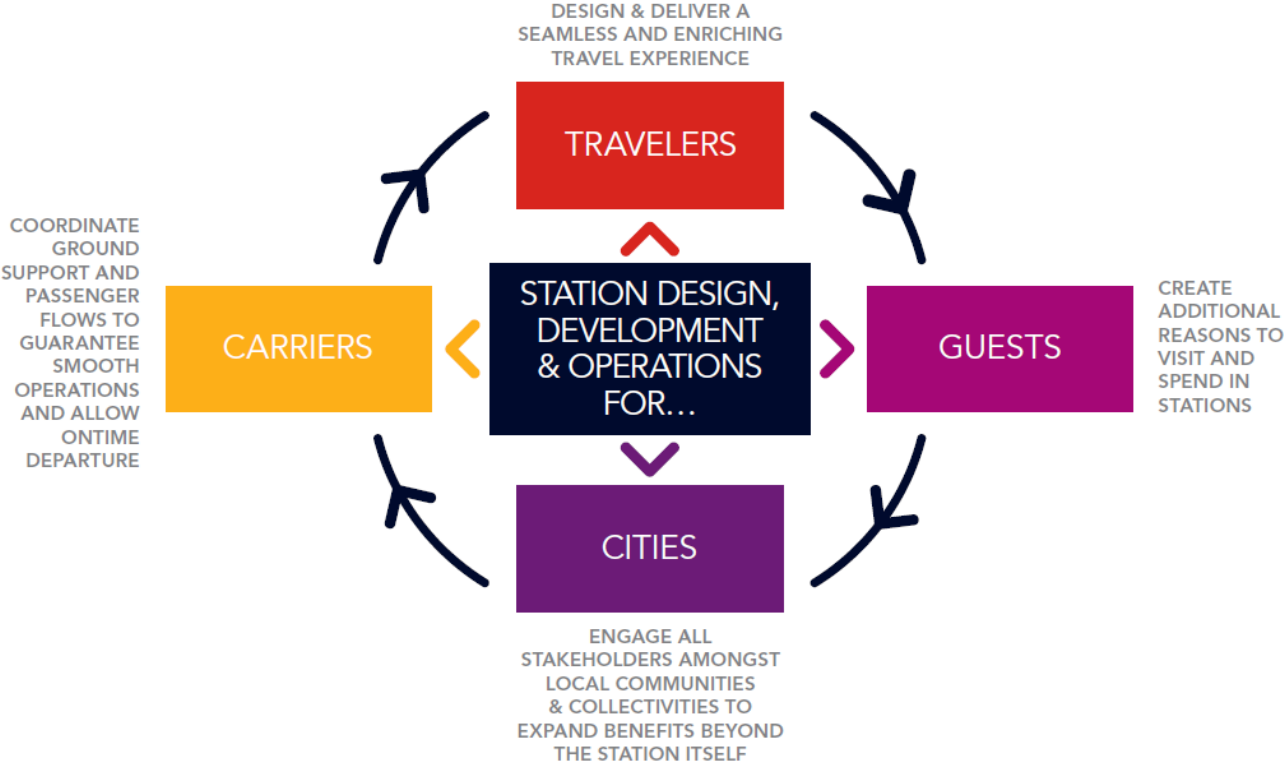
TOD & RETAIL DEVELOPMENT

- FEASIBILITY STUDIES
- FINANCIAL ENGINEERING
- FLOW ANALYSIS
- RETAIL STRATEGY & DEVELOPMENT

OPERATION & MAINTENANCE

- PROJECT MANAGEMENT ASSISTANCE
- FACILITY MANAGEMENT
- RETAIL MANAGEMENT
- STATION MANAGEMENT

4 CATEGORIES OF CUSTOMERS



STUDY CASE APPROACH & RELEVANT EXPERIENCES IN FRANCE

CREATION OF A PUBLIC-PRIVATE PARTNERSHIP

PARIS SAINT-LAZARE, FRANCE

We had the willpower to transform the station into a real living area opened to the city and to the transports, accessible for everyone and responding to the daily needs of its travelers with various shops and services.

The aim of the renovation was to link the subway level with the street level and the platform level and create a commercial space.



CREATION OF A TRANSPORTATION HUB

LE MANS, FRANCE

The project 'Lorient Odysée' created a multimodal exchange hub and transformed the neighborhood around the new station.

The aim was to facilitate the trips, increase the accessibility and the attractiveness of the territory and link the station to the city-center.



CAR PARK COVERS A PART OF THE STATION RENOVATION

BORDEAUX BELCIER, FRANCE

The arrival of the high-speed line in 2016 constituted a large opportunity of development for the Bordeaux agglomeration and the Region of Nouvelle-Aquitaine.

The aim of the project was to modernize the neighborhood around the station and the station itself. We partnered with a car parking operator in order to finance the station works.

By adapting its infrastructures, the station increases its capacity of reception while ameliorating the travelers comfort.



WHAT WE DO
INTERNATIONALLY

GUIDELINE FOR BUSINESS DEVELOPMENT

ISRAËL

In 2016, we realized a methodological guide for the implementation of a business development strategy in the Israeli train stations.

In 2017, within a study on the Savidor station, we assured a consulting and expertise mission on the implementation of shops in the stations.



OPERATION AND MAINTENANCE

SAUDI ARABIA

In accordance with a local partner, we led an ongoing project on the facility management of six train stations on the Hail-Riyadh line and the management of the head office of the Saudi Arabian Railways (SAR) – a 5-years contract.

We also did a consulting assignment with Keolis regarding the exploitation mission of the automatic metro in Riyadh. We were in charge of the “Facility Management” part.



RETAIL STUDIES

TEHRAN, IRAN

In February 2018 we rendered a retail study on the optimization of the commercial offer for the Tehran train station.

We reviewed the positioning of shops in relation with the flows, the activities and the range developed in order to stick closely to the travelers demands and pay particular attention to the technical needs of each of the developed retail concepts and to the logistics.



BUSINESS STUDIES

SOUTH KOREA

We contractualized with the city of Gwangmyeong in order to analyze the market potential of five Korean train stations.

The aim of this partnership was to work on the naming of the train station as the departure for the Peace Railway, for the development of the station railway activity and for its integration in the city.



STUDY OF A MULTIMODAL TRANSPORT HUB

SRI LANKA

We responded as a consortium to an invitation to tender for a technical and financial feasibility study regarding the creation of a Multimodal Transport Hub in Colombo. The project is financed by the French Treasury.

The Pettah Multimodal Hub is the keystone of the various public transport systems that will service Colombo's Central Business District.



RENOVATION CONCEPT STUDY

INDIA - AMBALA

SNCF signed an agreement with the Indian Railways (IRSDC) regarding the renovation of the Ambala station in India. The funding of the project was divided between the two parties (50% each).

For the project, SNCF was in charge of the renovation concept study and the execution roadmap for Ambala station.



RENOVATION CONCEPT STUDY

INDIA - LUDHIANA

The Indian Railways (IRSDC) wanted to create a partnership with SNCF regarding the renovation of the Ludhiana station. The funding of the project was divided between the two parties (50% each).

For the project, SNCF was in charge of the financial model. The aim was to finance the renovation thanks to a building project and the shops within the station.



ORGANIZATION

CONTACTS

SNCF HUBS & CONNEXIONS

16 avenue d'Ivry
75013 Paris
Tél. : 33(0)1 80 50 93 00
Fax. : 33(0)1 80 50 43 01
www.gares-sncf.com

➤ Fabrice Morenon, Managing Director
fabrice.morenon@sncf.fr

➤ Sylvain Jamet, Development Director
sylvain.jamet@sncf.fr

HUBS &
CONNEXIONS

